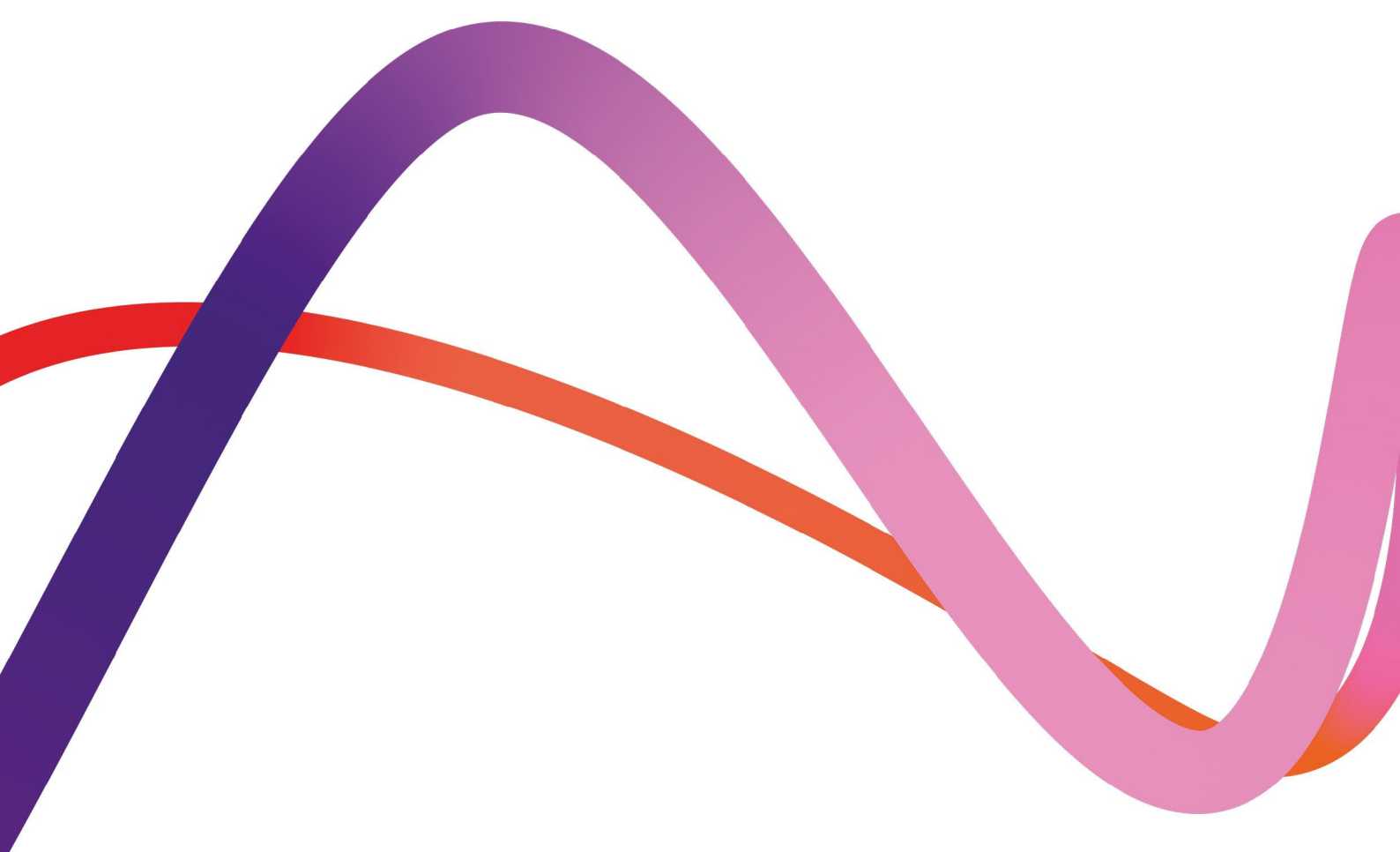


# Medworth Energy from Waste Combined Heat and Power Facility



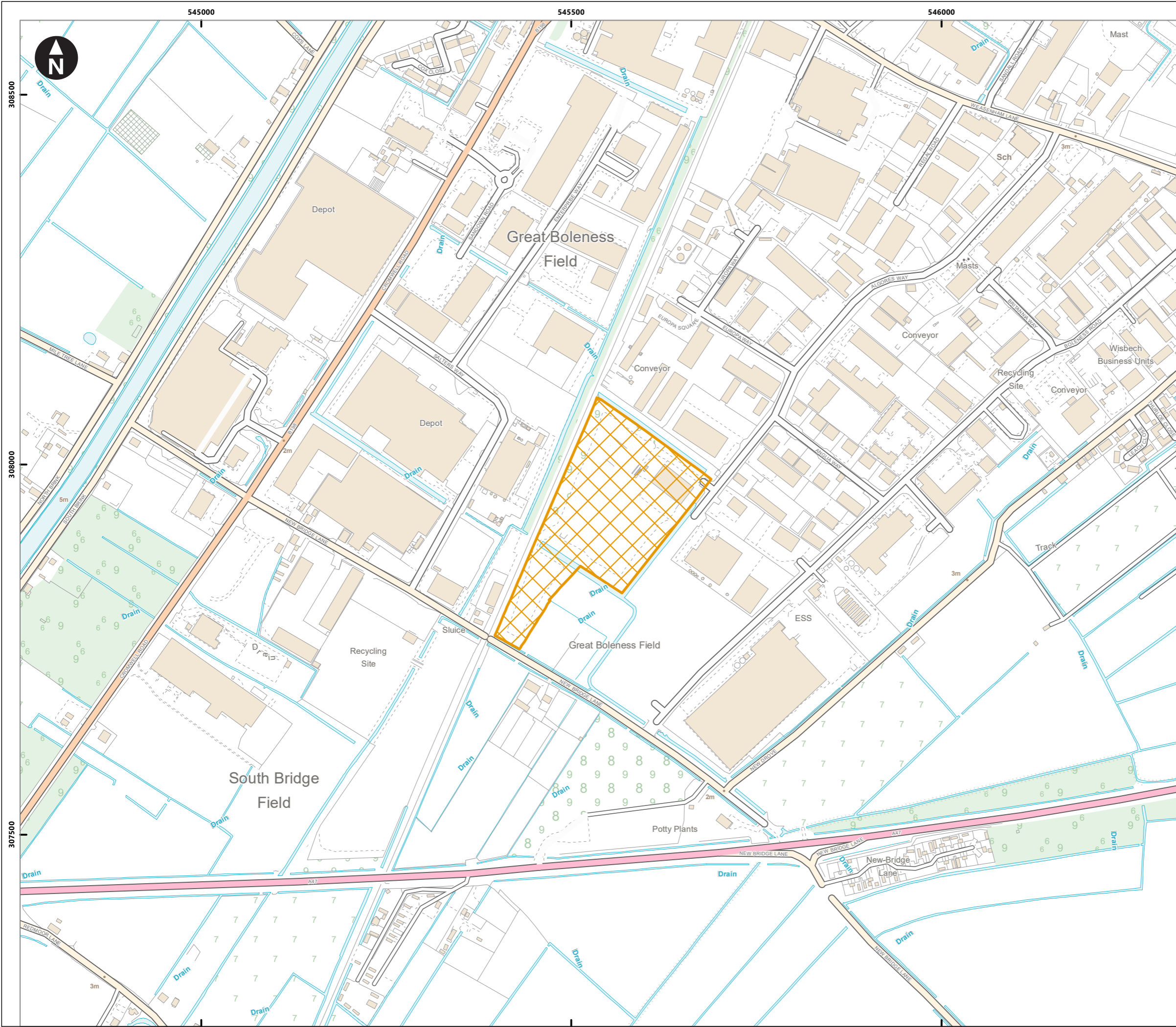
PINS ref. EN010110  
Document Reference: Vol 6.3  
Revision 1.0  
June 2022




## Environmental Statement Chapter 2 Alternatives Figures

Regulation reference: The Infrastructure  
Planning (Applications: Prescribed Forms  
and Procedure) Regulations 2009  
Regulation 5(2)(a)

**We inspire  
with energy.**




Key  
 EfW CHP Facility Site

0 100 200 300 m  
 Scale at A3: 1:5,000  
 © Crown Copyright. All rights reserved. Licence number AL100001776.



Medworth CHP Limited  
 Medworth Energy from Waste Combined Heat and Power Facility DCO  
 Environmental Statement  
 Chapter 2 - Alternatives

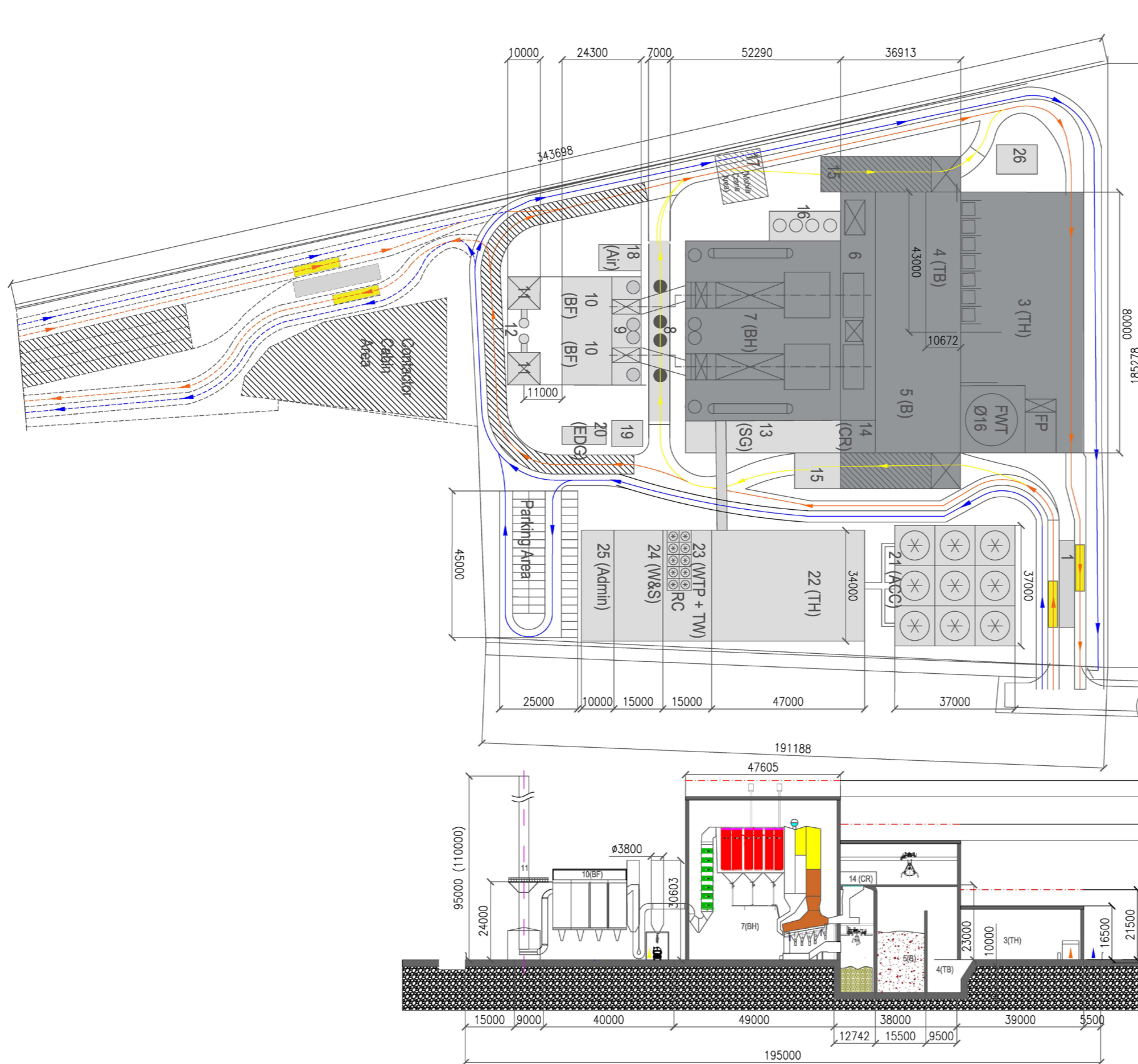
**Figure 2.1**  
**Initial boundary of the EfW CHP Facility Site**

June 2022  






Originator: Neil Patton  
G:\Drawings\InDesign\41310-Shr322.indd



- 1 Weighbridge 1
- 2 Weighbridge 2 (optional)
- 3 Tipping Hall with 7 tipping bays, quarantine area portal cabin for staff, fire water tank (FWT) and fire water pump cabin (FP)
- 4 Tipping bunker
- 5 Main waste bunker
- 6 Waste chute platform with 2 waste chutes, auxiliary clearance device for waste blockages, shredder chute, 2 bunker ears with openings to exit waste crane grabs and 3 maintenance areas to maintain and change grabs
- 7 Boiler house with 2 boilers, 2 feed water tanks, demin water tanks, boiler water tanks, process water tank
- 8 APCr lime and AC loading area with APCr Silos on top
- 9 APC plant with lime and AC silos and reactors
- 10 2 bag filter houses
- 11 2 ID fan cabins
- 12 2 chimneys
- 13 Switch gear building with lift
- 14 Control room
- 15 2 IBA loading houses
- 16 Diesel tank and Urea tank building
- 17 Mobile crane slab
- 18 Pressurised air plant building
- 19 main transformer
- 20 Emergency Diesel generator
- 21 Air cooled condenser
- 22 Turbine hall with coolers
- 23 Water treatment plant with towns water plant
- 24 Work shop and stores
- 25 Admin building
- 26 Sewage oil separator

Client

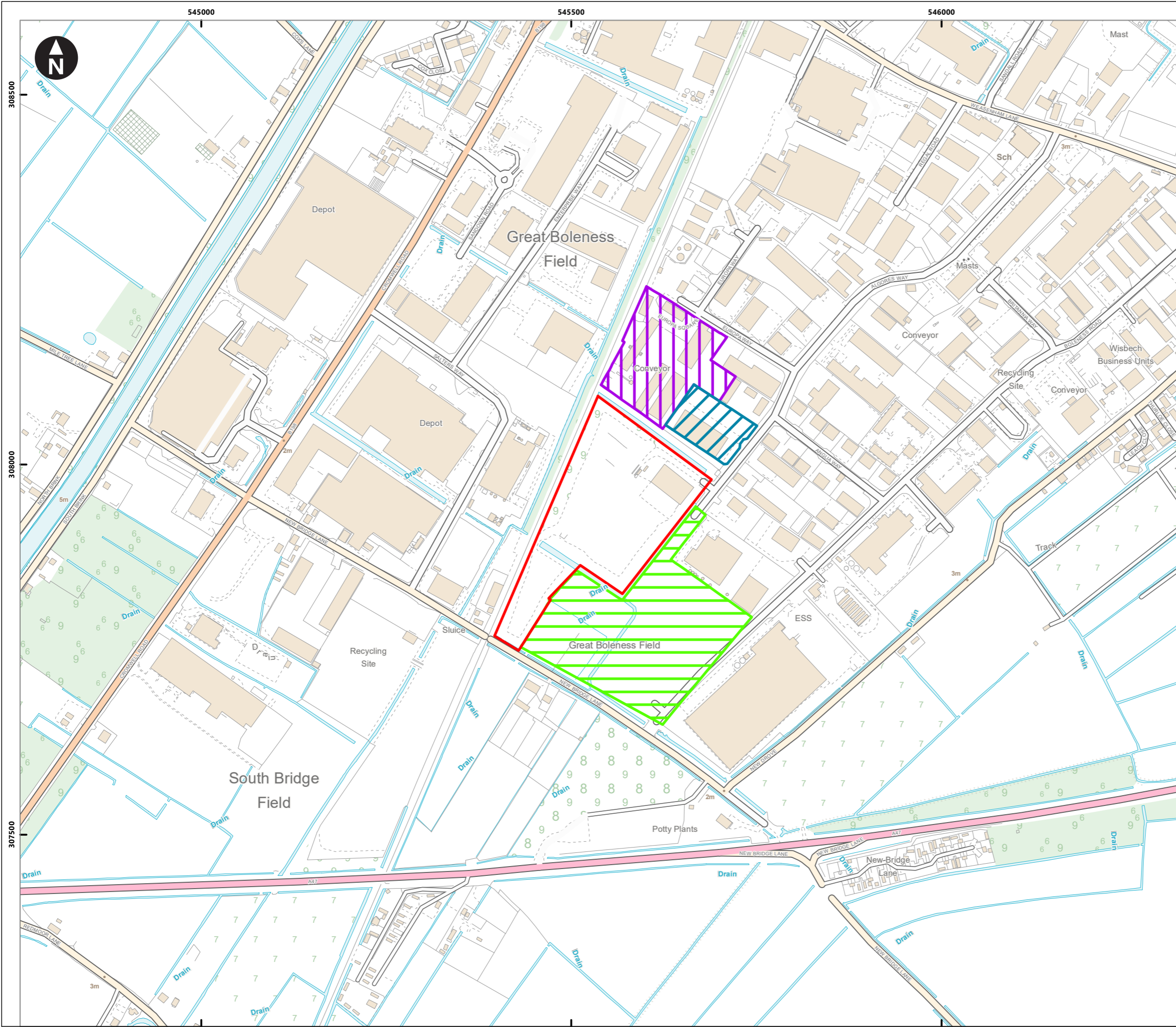


Medworth CHP Limited  
Medworth Energy from Waste Combined Heat and Power Facility DCO  
Environmental Statement  
Chapter 2 – Alternatives

**Figure 2.2**  
**Initial EfW CHP Facility Site Layout**

June 2022





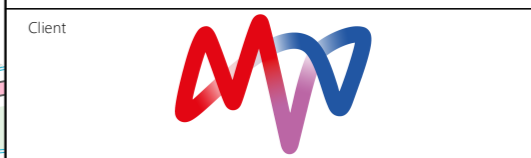
Key

- EFW CHP Facility Site presented at EIA Scoping

**Additional Land Take Options**

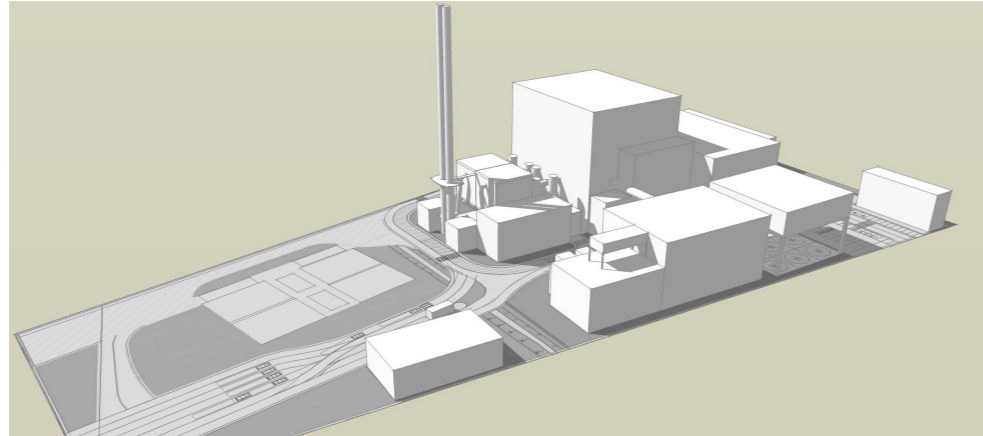
- Area A
- Area B
- Area C

0 100 200 300 m  
Scale at A3: 1:5,000  
© Crown Copyright. All rights reserved. Licence number AL100001776.

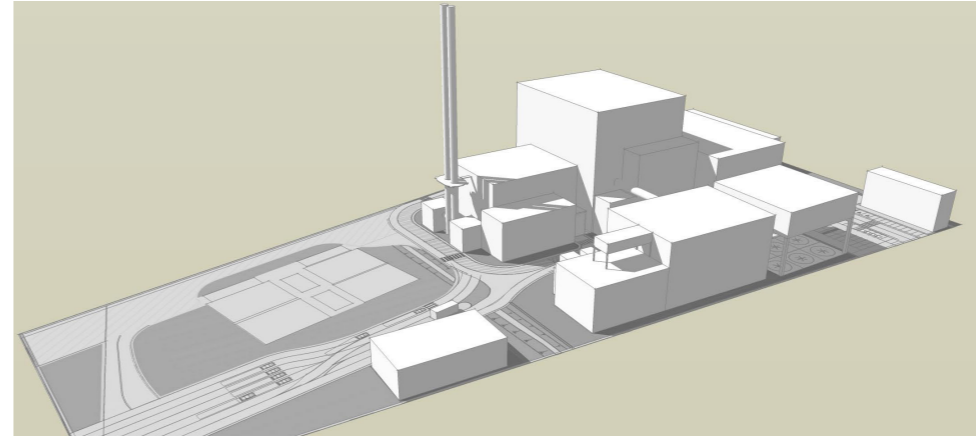


Medworth CHP Limited  
Medworth Energy from Waste Combined Heat and Power Facility DCO  
Environmental Statement  
Chapter 2 - Alternatives  
**Figure 2.3**  
**Additional Land Take Options**

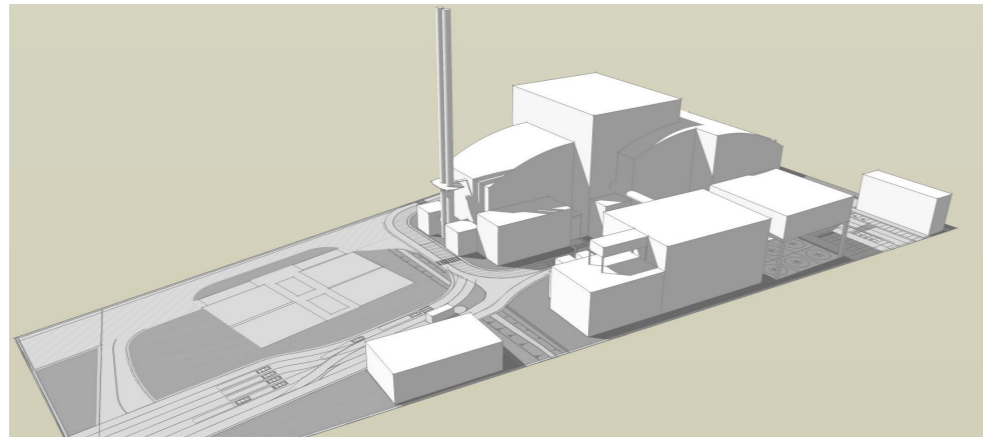
# Massing Options



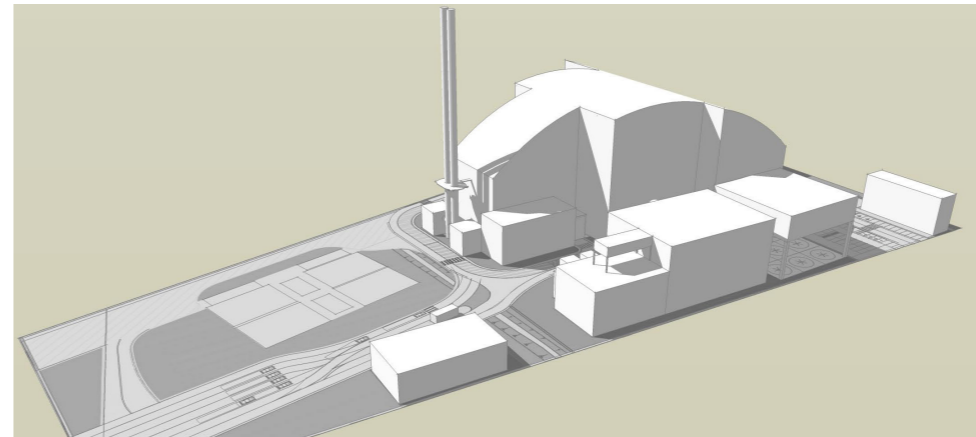
Massing model 1






Massing model 2 - Preferred



Massing model 3



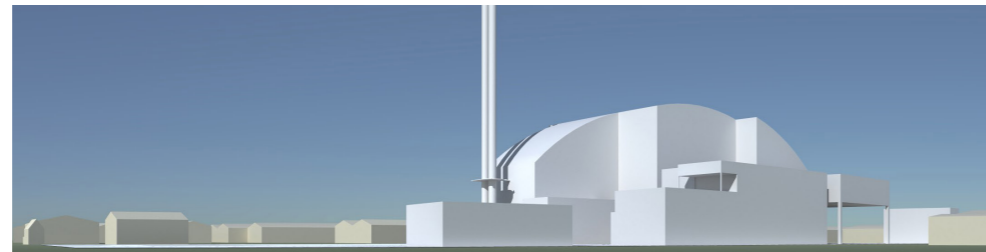
Massing model 4

Client	
Medworth CHP Limited Medworth Energy from Waste Combined Heat and Power Facility DCO Environmental Statement Chapter 2 – Alternatives	
<b>Figure 2.4</b> <b>Massing Options of the EfW CHP Facility Site</b>	
June 2022	
	

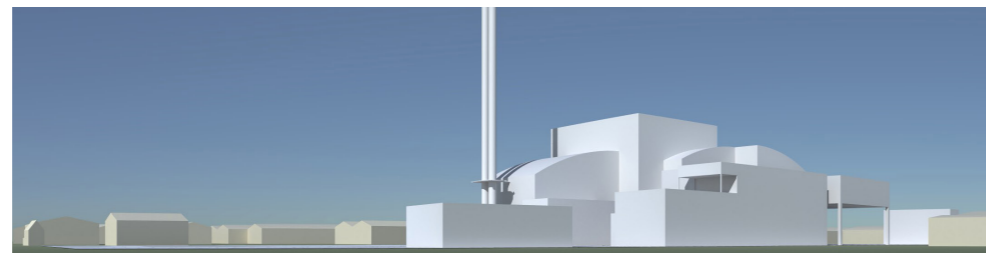
# Viewpoint 1

Eastern Edge of New Bridge Lane

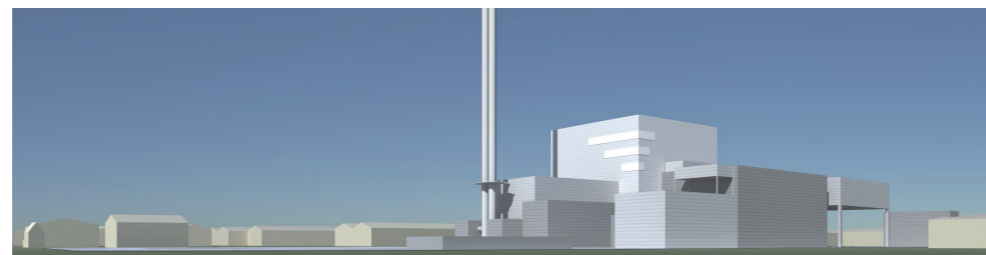
Massing model 4



Massing model 3



Massing model 2



View Key



Client

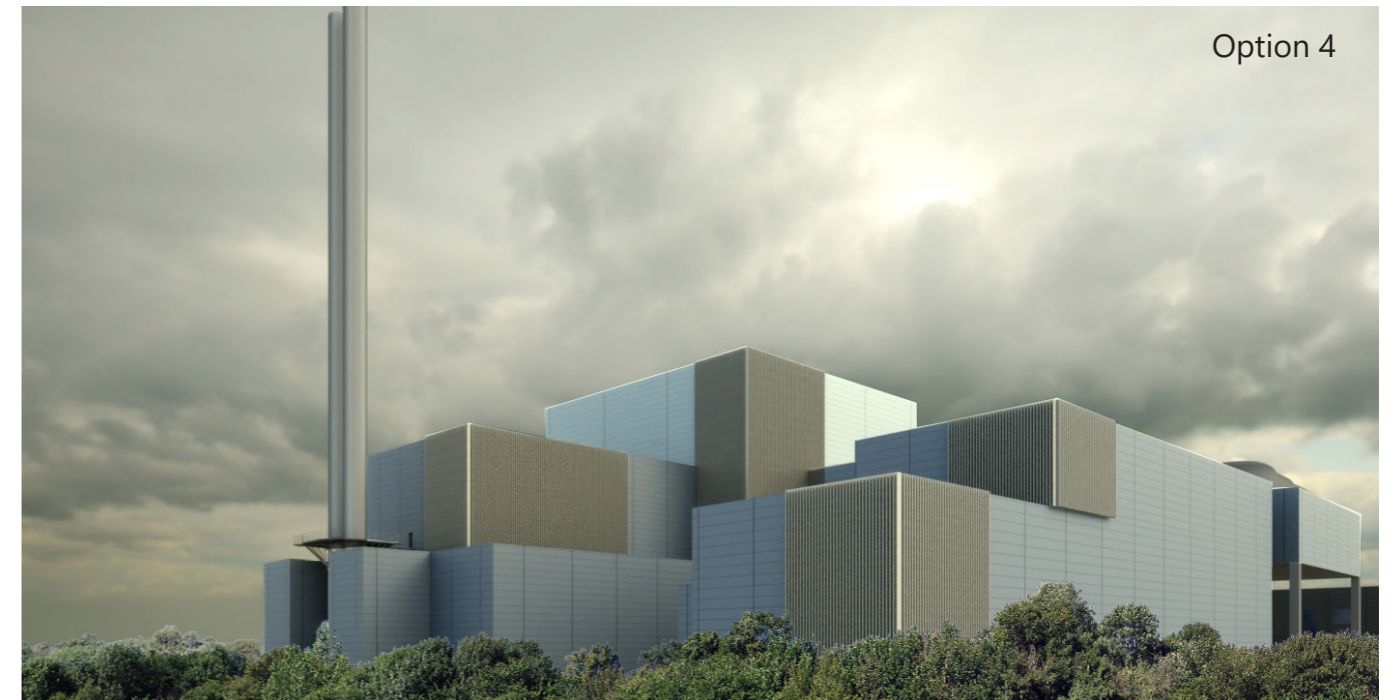
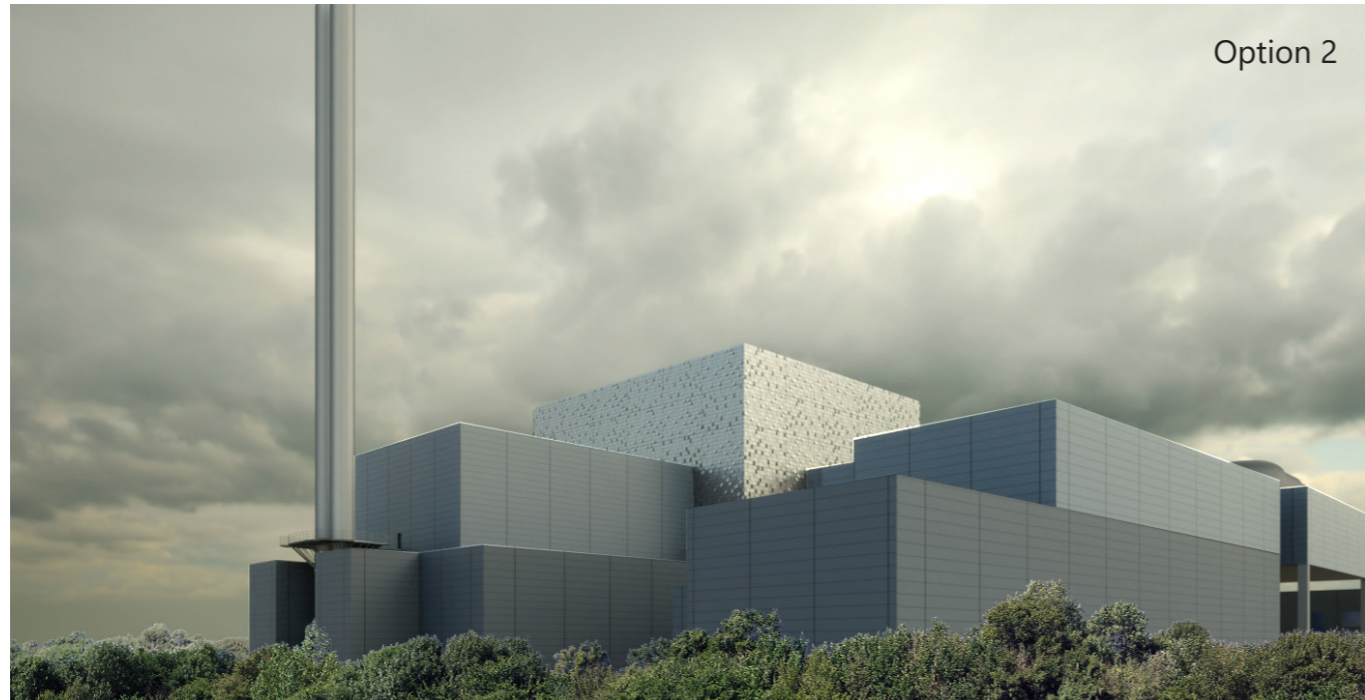
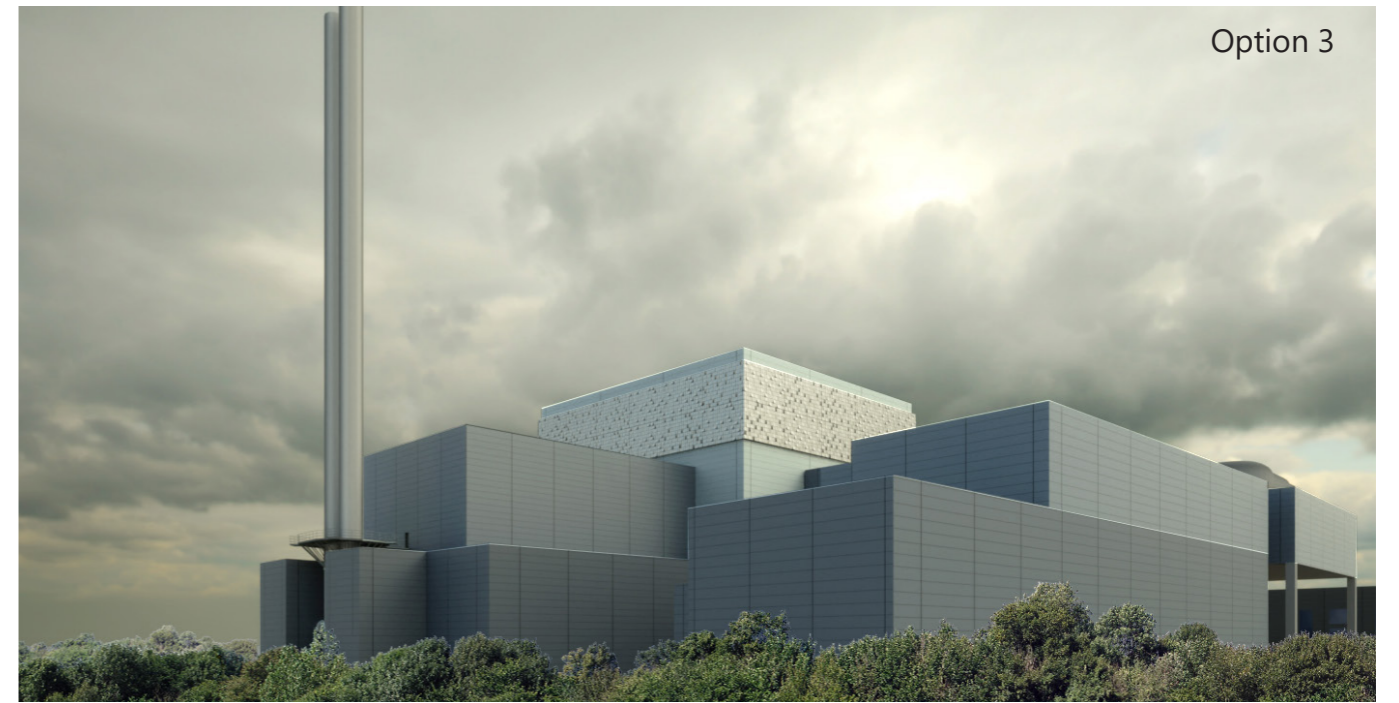


Medworth CHP Limited  
Medworth Energy from Waste Combined Heat and Power Facility DCO  
Environmental Statement  
Chapter 2 – Alternatives


**Figure 2.5**  
**Viewpoint 1 Massing Options**

June 2022







Client

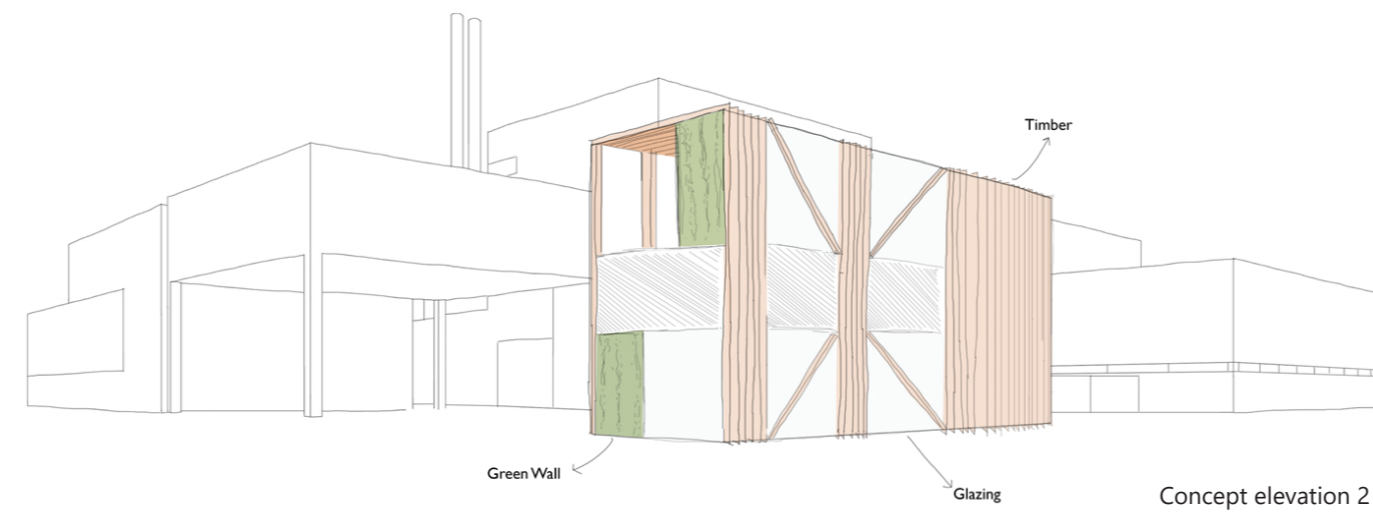
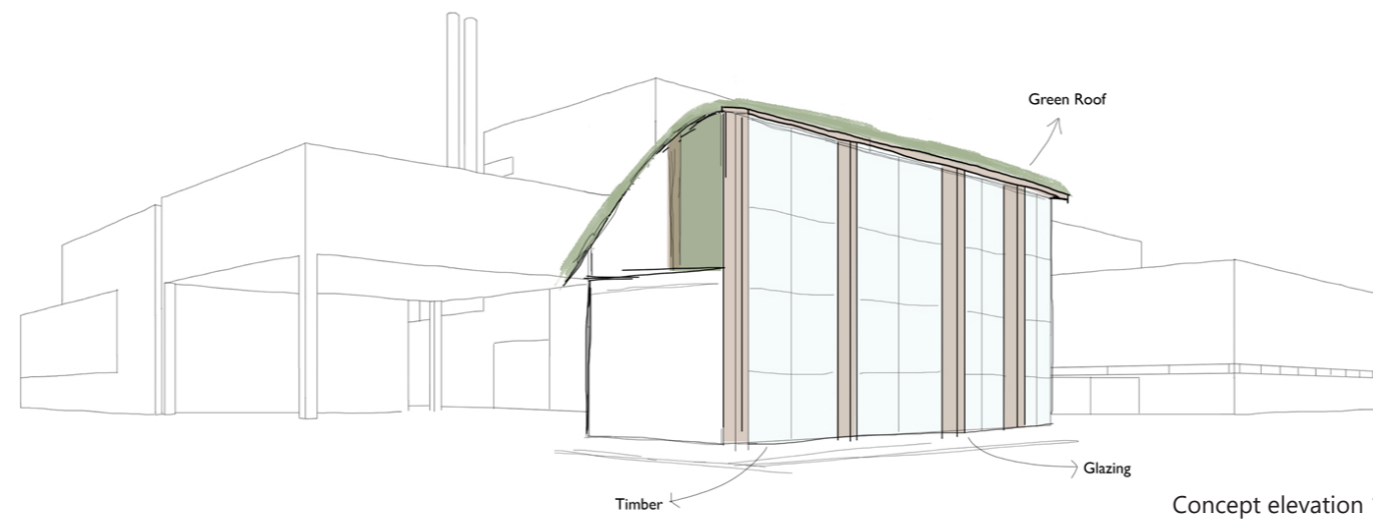





Medworth CHP Limited  
Medworth Energy from Waste Combined Heat and Power Facility DCO  
Environmental Statement  
Chapter 2 – Alternatives

**Figure 2.6**  
**Cladding options**

June 2022

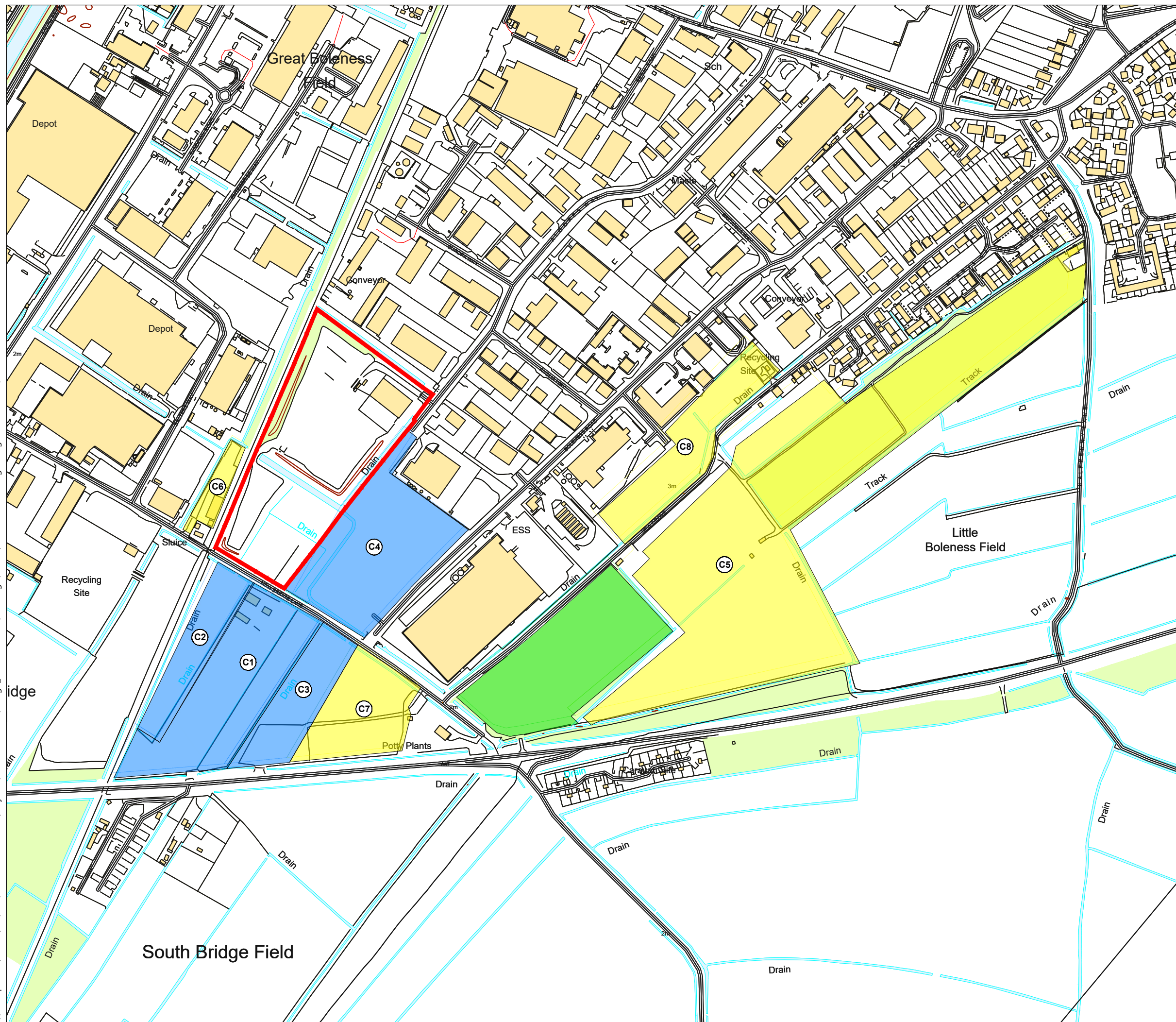




Client	
Medworth CHP Limited Medworth Energy from Waste Combined Heat and Power Facility DCO Environmental Statement Chapter 2 – Alternatives	
<b>Figure 2.7</b> <b>Administration building concept design</b>	
June 2022 	
	



\\woodplc.net\Wood\UK\SAL\SAL-FS12-SHARED\Projects\41310-Wisbech\Design\_Technical - GI\Drawings\CAD\41310-Shr328.dwg Originator: JON.SQUIRE



- Key
- EfW CHP Facility Site
  - Potential land identified for contractors compound in the EIA Scoping Report (Dec 2019)
  - Potential vacant/available land Identified for contractors compound after publication of the EIA Scoping Report (Dec 2019)
  - Orchard - not considered

Stage 1 Contractors compound minimum land requirements >1Ha*		
Land Parcel	Total size (Ha)	Meets minimum requirements?
C1	3.0	Yes
C2	1.0	No
C3	1.2	Yes
C4	3.0	Yes
C5	12.5	Yes
C6	0.3	No
C7	1.5	Yes
C8	1.8	Yes

\* Based on the Applicant's experience

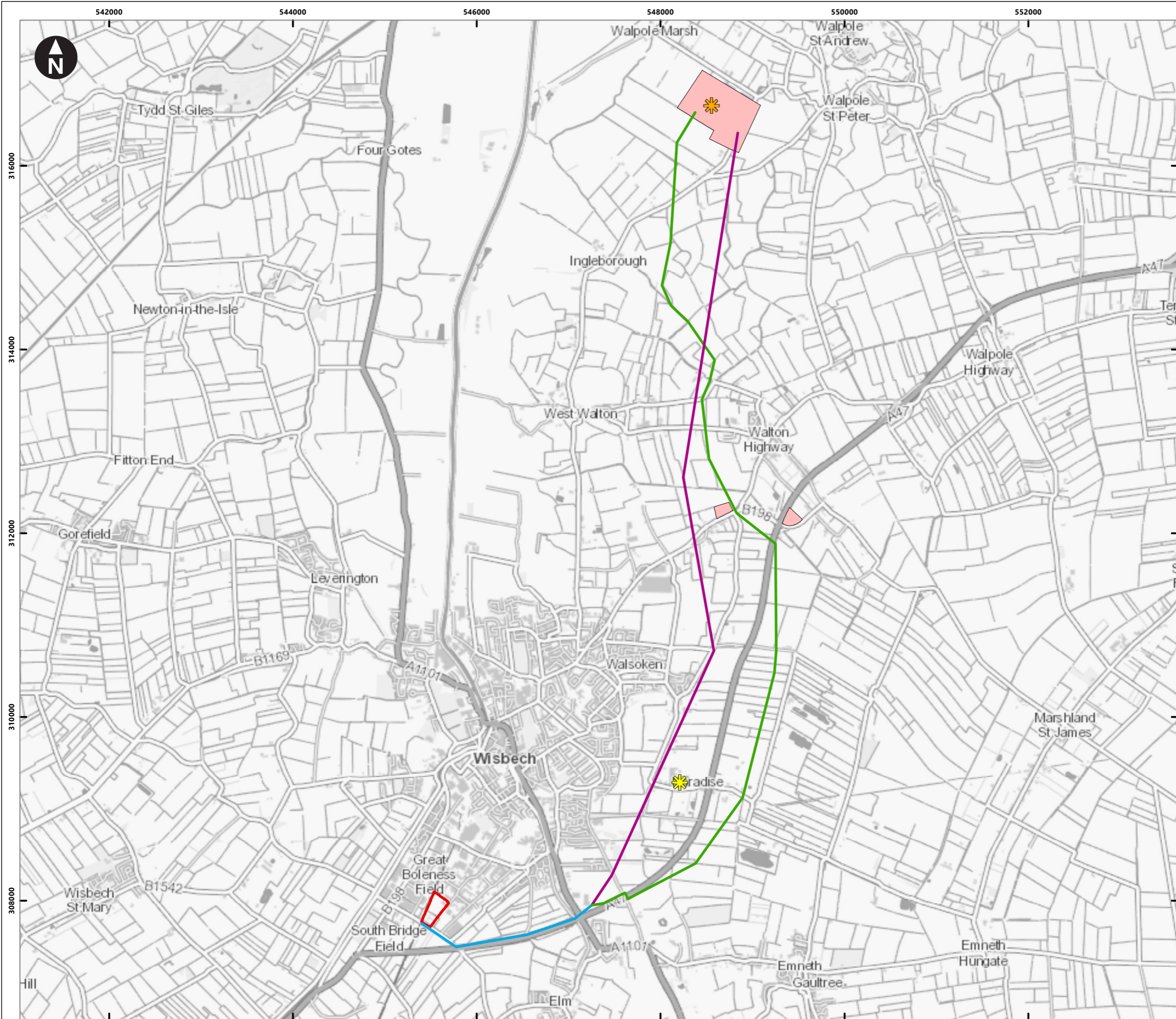
0 m  300 m  
 Scale 1:5000 @ A3  
 © Crown copyright. All rights reserved. Licence number AL100001776.



Medworth CHP Limited  
 Medworth Energy from Waste Combined Heat and Power Facility DCO  
 Environmental Statement  
 Chapter 2 – Alternatives

**Figure 2.8**  
**EfW CHP Facility Temporary Construction Compound Options**

H:\Projects\41310 Wisbech\Design\_Technical - GI\Drawings\ArcGIS\Workspaces\41310-Shr330.mxd Originator: simon.green2



**Key**

- EFW CHP Facility Site
- Temporary Construction Compounds
- Walpole Substation
- Walsoken Substation

**Grid Connection Route Alignment Options**

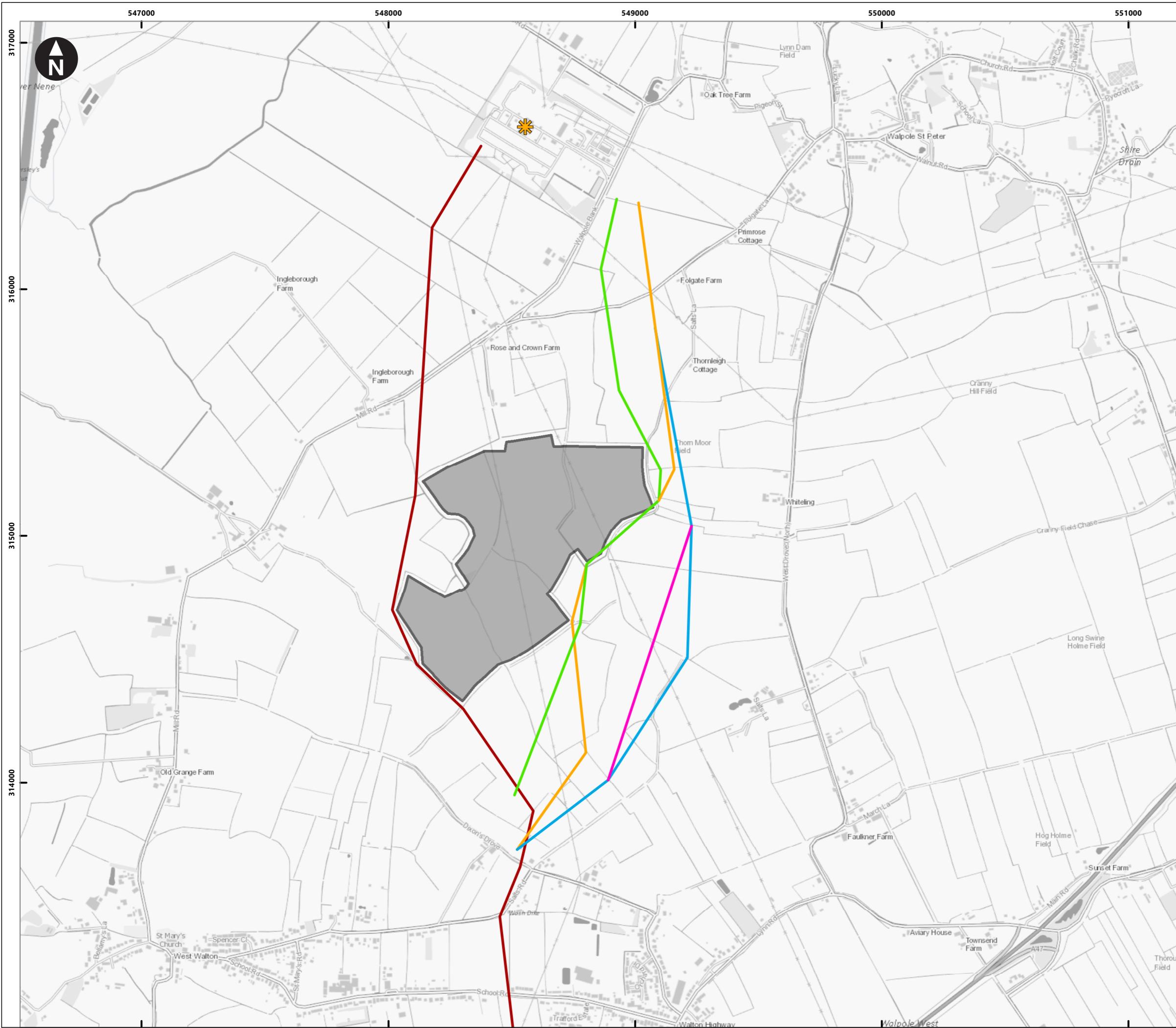
- OHL 1
- OHL 2
- UGC

0 500 1,000 1,500 2,000 m  
 Scale at A3: 1:40,000  
 © Crown Copyright. All rights reserved. Licence number AL100001776.






Medworth CHP Limited  
 Medworth Energy from Waste Combined Heat and Power Facility DCO  
 Environmental Statement  
 Chapter 2 - Alternatives





**Figure 2.9**  
**Grid Connection East Alternative Routes**



Key

-  Walpole Substation
-  Rose Hill Solar Farm
-  OHL 2

**Grid Connection Northern Alignment Options**

-  Route 1
-  Route 2
-  Route 3
-  Route 4

0 200 400 600 800 m  
Scale at A3: 1:15,000  
© Crown Copyright. All rights reserved. Licence number AL100001776.

Client

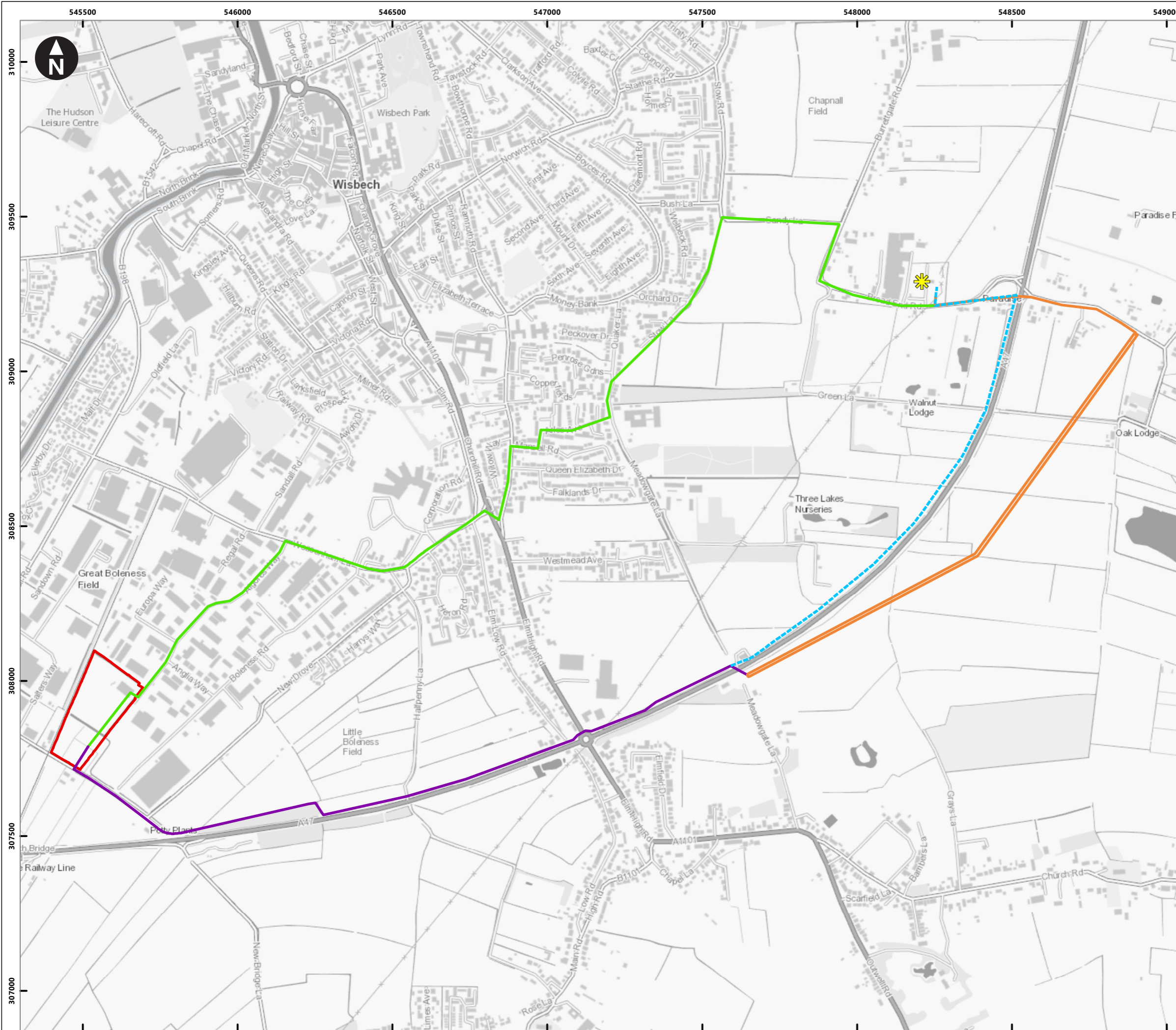


Medworth CHP Limited  
Medworth Energy from Waste Combined Heat and Power Facility DCO  
Environmental Statement  
Chapter 2 - Alternatives

**Figure 2.10**  
**Grid Connection Northern Alignment Options avoiding the Solar Farm**

June 2022





**Key**

- EFW CHP Facility Site
- ✳ Walsoken Substation

**Walsoken Alternative Grid Connection Options**

- Alternative Grid Connection 1
- Alternative Grid Connection 2
- Alternative Grid Connection 3
- Walpole Underground Route\*

**Note:**  
\* The Walpole Underground Route section is common to both Alternative Grid Connection 2 and 3.

0 100 200 300 400 500 600 700 m

Scale at A3: 1:12,000

© Crown Copyright. All rights reserved. Licence number AL100001776.



Medworth CHP Limited  
Medworth Energy from Waste Combined Heat and Power Facility DCO  
Environmental Statement  
Chapter 2 - Alternatives

**Figure 2.11**  
**Walsoken Alternative Grid Connection Options**



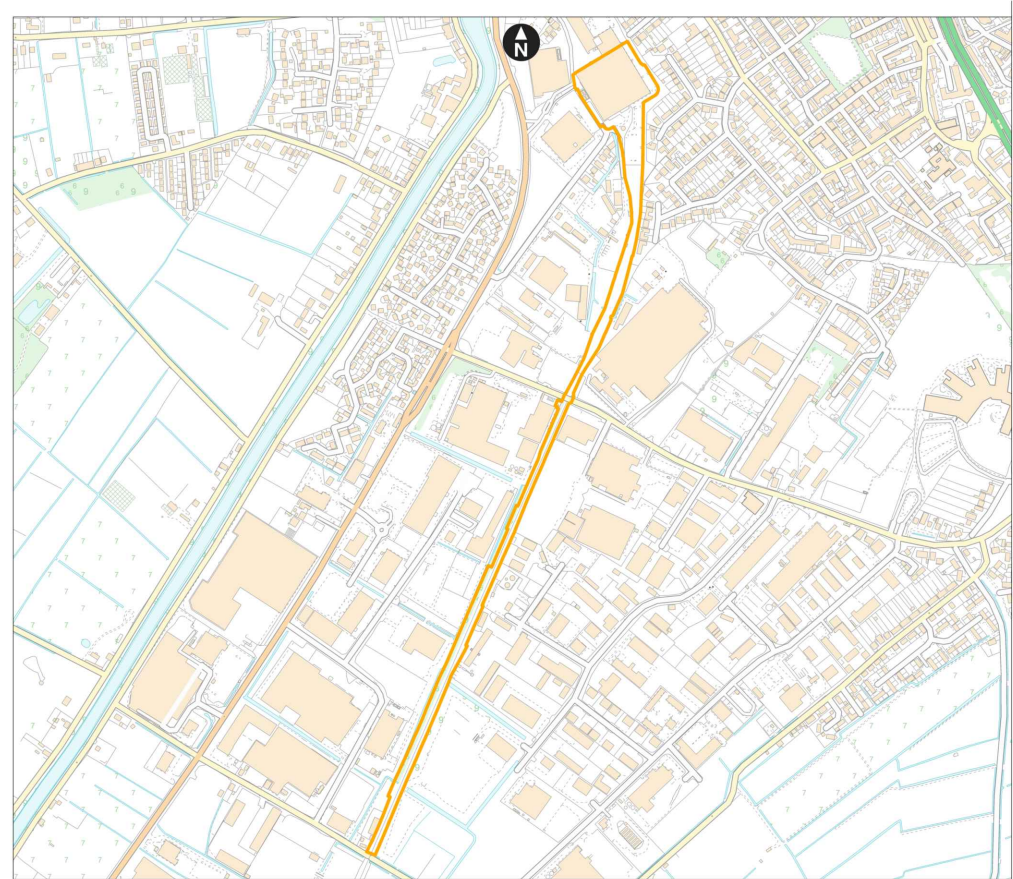
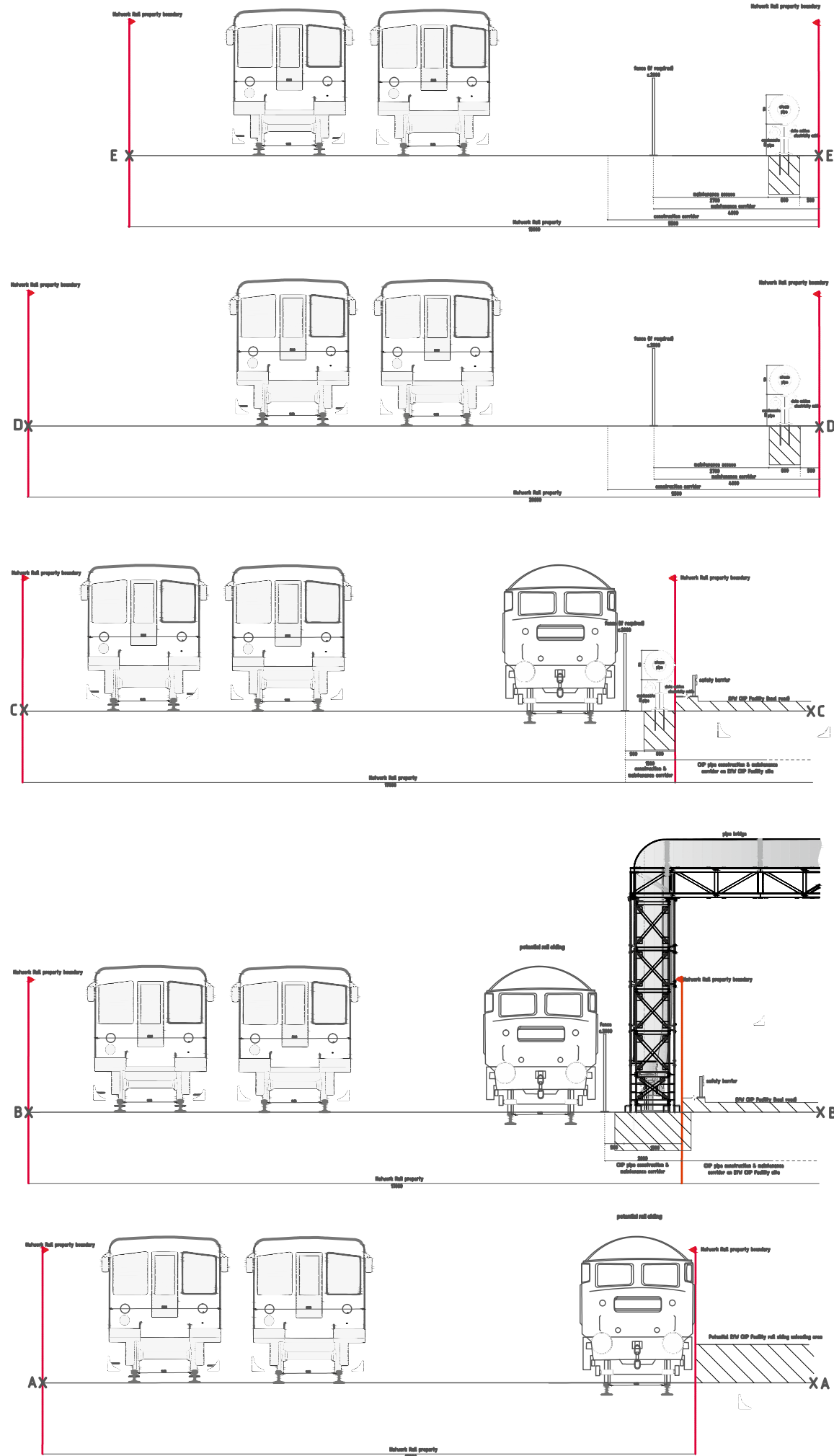
Key  
● Walsoken substation location options

0 100 200 300 m  
Scale at A3: 1:5,000  
© Crown Copyright. All rights reserved. Licence number AL100001776.



Medworth CHP Limited  
Medworth Energy from Waste Combined Heat and Power Facility DCO  
Environmental Statement  
Chapter 2 - Alternatives  
**Figure 2.12**  
**Alternative location options for the Walsoken substation**

June 2022  
● ● ●



Client



Medworth CHP Limited  
 Medworth Energy from Waste Combined Heat  
 and Power Facility DCO  
 Environmental Statement  
 Chapter 2 - Alternatives  
**Figure 2.13**  
**Indicative CHP Connection General**  
**Arrangement**

June 2022



*This page is intentionally blank*

